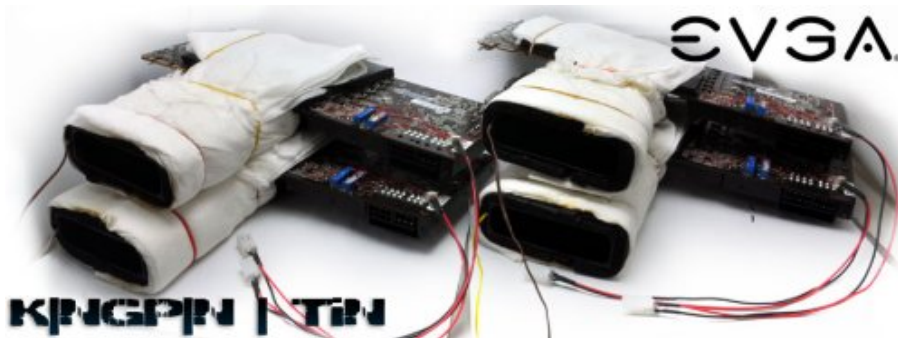


## Corsair ancora protagonista di 2 WR nel 3DMark



**LINK (<https://www.nexthardware.com/news/overclock/3556/corsair-ancora-protagonista-di-2-wr-nel-3dmark.htm>)**

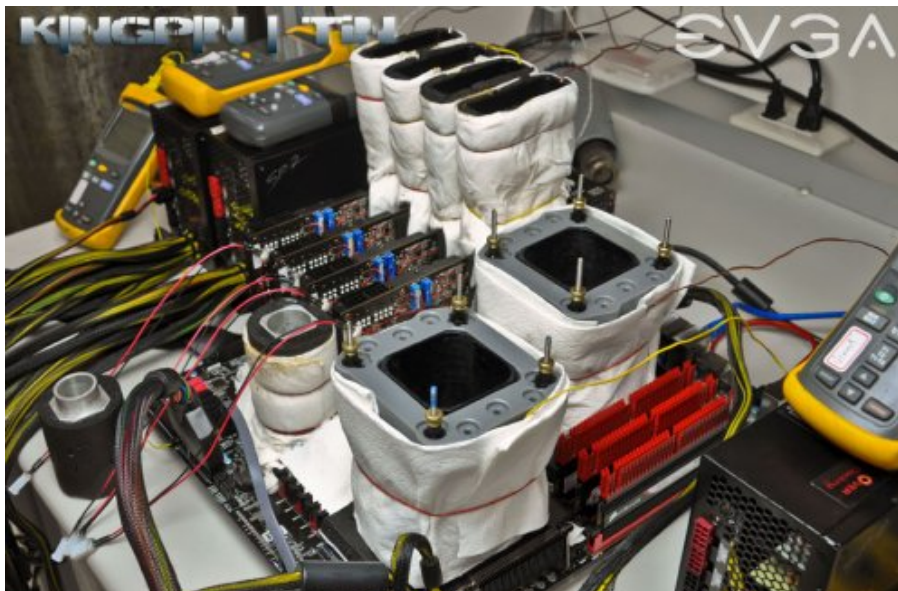
"Kingpin" e "Tin" infrangono i WR nel 3DMark Vantage e nel 3DMark 11



↔

Corsair, produttore leader a livello mondiale di memorie ad alte prestazioni e componenti per PC e gaming di alta qualità, annuncia che un sistema equipaggiato con le proprie leggendarie Dominator GTX2 ha ottenuto due nuovi World Records, rispettivamente nel 3DMark Vantage e nel 3DMark 2011.

↔





↔



↔

Di seguito, gli impressionanti screen di "K|ngp|n" e "Tin" ottenuti su EVGA Classified SR2 equipaggiata con 2 Intel XEON X5690, 4 schede video EVGA opportunamente modificate e, infine, 3 banche delle strepitose Corsair Dominator GTX2, attualmente le migliori ram per overclock in circolazione.

↔

**3DMark Vantage Results:**

- 3DMARK SCORE: P79364
- GPU SCORE: 79089
- CPU SCORE: 80200
- GPU TEST 1: 207.32 FPS
- GPU TEST 2: 258.86 FPS
- CPU TEST 1: 11685.6 OPS
- CPU TEST 2: 93.02 OPS

**EVGA E-LEET Tuning Utility:**

- Processor: Intel Xeon X5690
- Code Name: Westmere-EP
- Package: Socket 1366 LGA
- Technology: 32 nm
- Core Voltage: 1.712 V
- Specification: Intel(R) Xeon(R) CPU X5690 @ 3.47GHz (ES)
- Family: 6
- Ext. Family: 6
- Instructions: MMX, SSE, SSE2, SSE3, SSSE3, SSE4.1, SSE4.2, EM64T
- Clocks (Core #0): Core Speed 3494.7 MHz, Multiplier 27.86 (12.00 - 26.0)
- Cache: L1 Data 6 x 32 Kbytes 8-way, L1 Inst 6 x 32 Kbytes 4-way, Level 2 6 x 256 Kbytes 8-way, Level 3 12 Mbytes 16-way
- Cores: 6 | Threads: 12

**CPU-Z:**

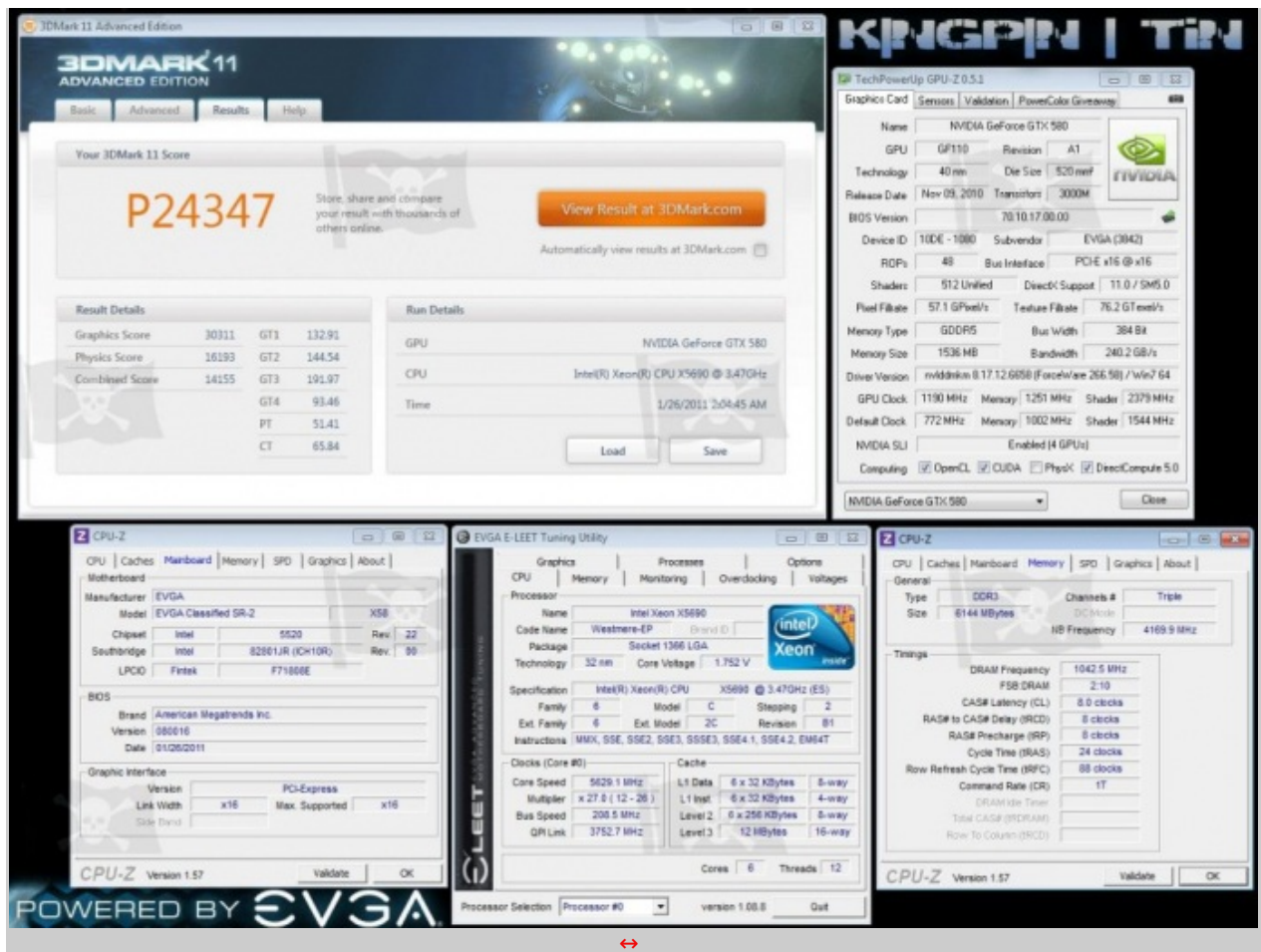
- General: Type DDR3, Size 4096 Mbytes, Channels # Single, NB Frequency 4070.2 MHz
- Timings: DRAM Frequency 1017.8 MHz, FSB DRAM 2-10, CAS# Latency (CL) 8.0 clocks, RAS# to CAS# Delay (RCD) 8 clocks, RAS# Precharge (RP) 8 clocks, Cycle Time (RAS) 24 clocks, Row Refresh Cycle Time (RFC) 88 clocks, Command Rate (CR) 1T

**CPU-Z Motherboard:**

- Manufacturer: EVGA
- Model: EVGA Classified SR-2
- Chipset: Intel 5620
- Southbridge: Intel 82801JR (ICH10R)
- LPDD: Fintek F71800E
- Brand: American Megatrends Inc.
- Version: 080016
- Date: 10/28/2010
- Graphic Interface: Version, Link Width x16, Max. Supported x16

↔

↔



↔

Per maggiori informazioni visitate il [Blog di Corsair \(http://www.corsair.com/blog/kingpin-and-tin-take-world-records-with-corsair-memory/?utm\\_source=Corsair&utm\\_medium=PressRelease&utm\\_content=BlogLink&utm\\_campaign=Dual3DMarkRec\)](http://www.corsair.com/blog/kingpin-and-tin-take-world-records-with-corsair-memory/?utm_source=Corsair&utm_medium=PressRelease&utm_content=BlogLink&utm_campaign=Dual3DMarkRec).

↔

↔